

SFT

Sanxin Façade Technology

Thermal Sliding Door System-SD4100T

DESIGN ENGINEERING

MATERIAL TESTING

FABRICATION

DELIVERY

BUILDING FAÇADE SUPPLY SPECIALIST

Lift and Sliding Door System-SD4100T

The sliding door system, as one of SFT's innovative design, is developed by R & D members from Hong Kong with solid experience in handling high rise and prestigious buildings around the world.

With SFT's unbeatable price and quality service, SD4100T can be a cost effective product for high-end residential and commercial projects.

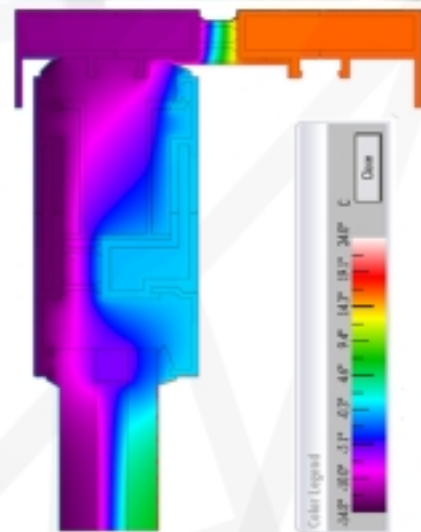
Key Features:

1. Allow large vision glass opening up to 2000mm (w) x 2750mm (ht)/ 15' (w) x 6' - 6"(ht).
2. Excellent water resistance performance up to 1 kPa (21 psf) according to ASTM E331 and AAMA 501.1.
3. Excellent wind resistance up to 4.28kPa (90psf) and ideal for high-rise building.
4. Easy for installation, all door panel to be pre-assembled and glazed in shop prior delivery to minimize field resource.
5. Excellent thermal performance, with high performance glass unit, it can achieve U-value of 1.1~3.6 W/m²K (0.93~2.0 Btu/hr.ft.F)*.

Quality Assurance

Strict QA/QC control production at factory that is certified for ISO 9001 and ISO 14001.

*Actual U-value to be subject to each job case like could be vary due to vision/ spandrel ratio, selection of glass... etc



THERMAL ANALYSIS



ISO 14001:2004

ISO 9001:2008

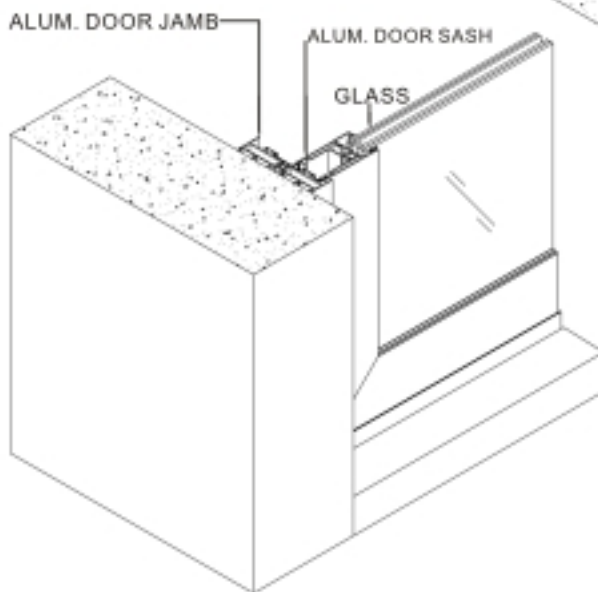
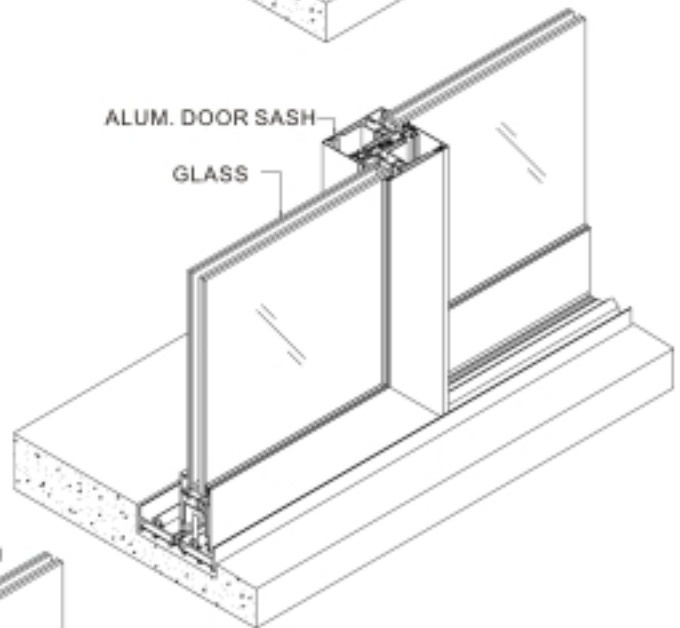
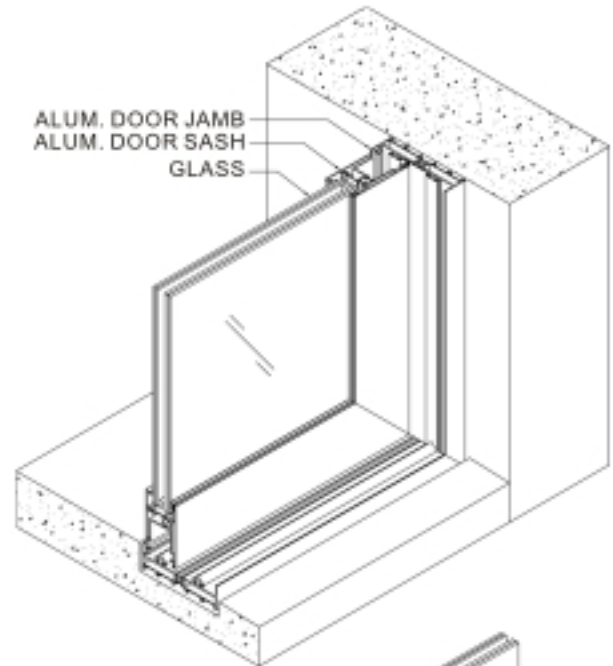
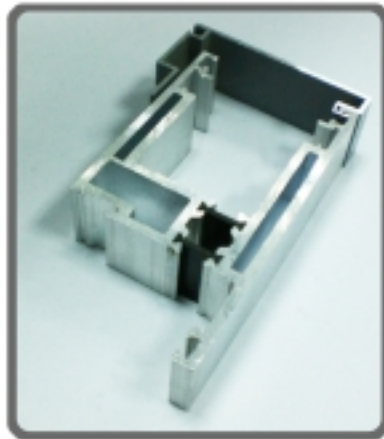


Subsidiary of AVIC Group

www.sanxinfacade.com
info@sanxinfacade.com

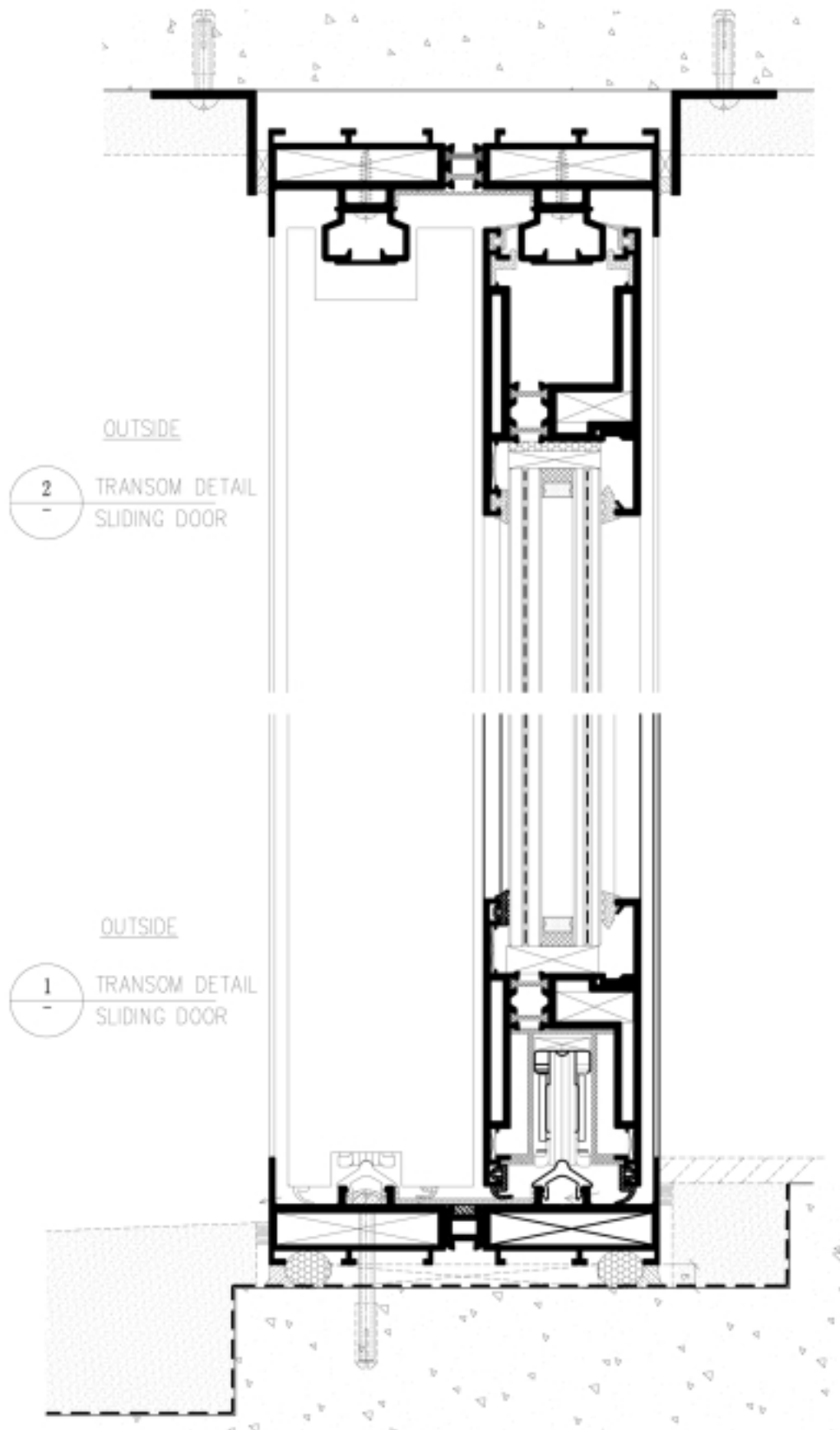
ALL DESIGN CONCEPTS AND DRAWINGS ARE COPYRIGHT RESERVED BY "SANXIN FAÇADE TECHNOLOGY LTD.". DO NOT SCALE THE DRAWINGS.

ASSEMBLY DRAWING

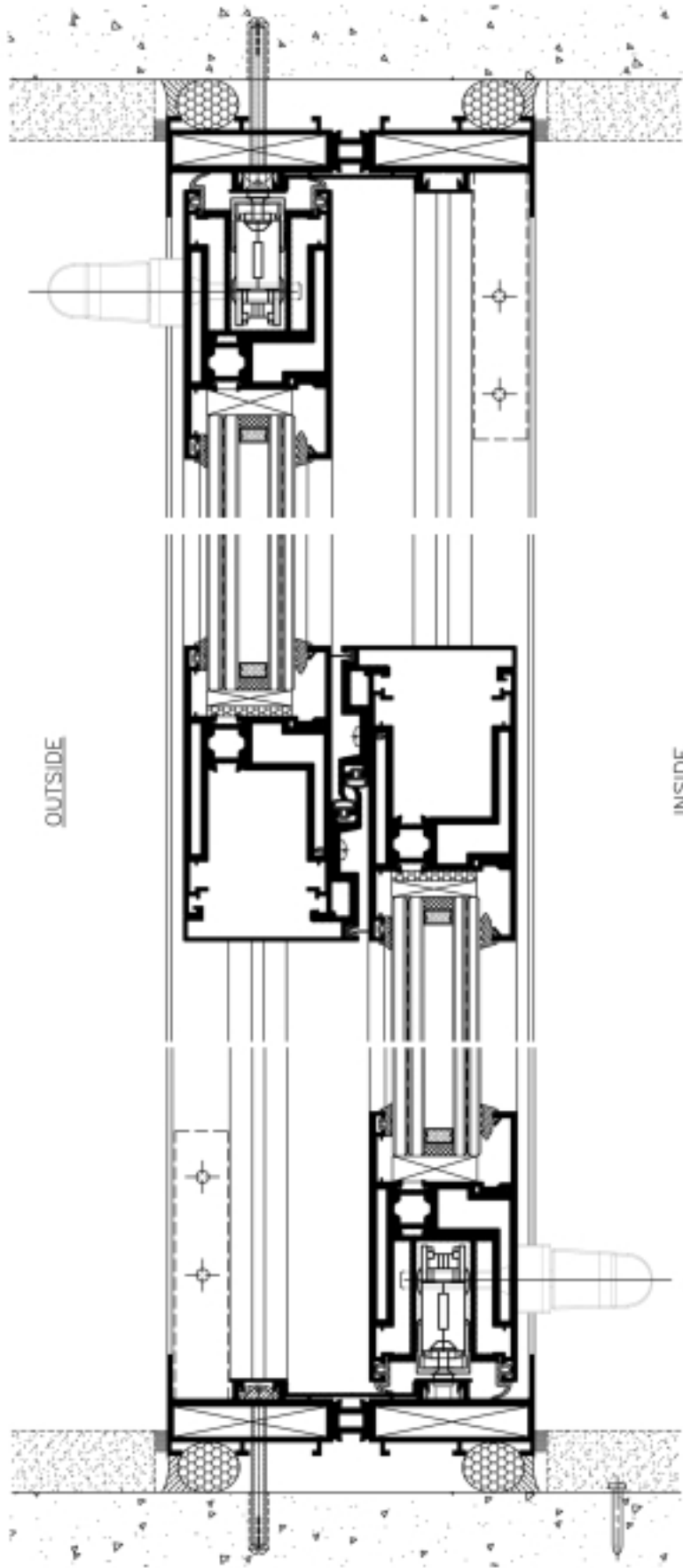


SECTION

ALL DESIGN CONCEPTS AND DRAWINGS ARE COPYRIGHT RESERVED BY "SANXIN FAÇADE TECHNOLOGY LTD."
DO NOT SCALE THE DRAWINGS.



ALL DESIGN CONCEPTS AND DRAWINGS ARE COPYRIGHT RESERVED BY "SANXIN FAÇADE TECHNOLOGY LTD.". DO NOT SCALE THE DRAWINGS.



1 MULLION DETAIL
SLIDING DOOR

2 MULLION DETAIL
SLIDING DOOR

3 MULLION DETAIL
SLIDING DOOR

PLAN