

SFT

Sanxin Façade Technology

Lift & Sliding Door System-SD4000

DESIGN ENGINEERING

MATERIAL TESTING

FABRICATION DELIVERY

Lift and Sliding Door System-SD4000

The sliding door system, as one of SFT's innovative design, is developed by R & D members from Hong Kong with solid experience in handling high rise and prestigious buildings around the world.

With SFT's unbeatable price and quality service, SD4000 can be a cost effective product for high-end residential and commercial projects.

Key Features:

1. Allow large vision glass opening up to 2000mm (w) x 2750mm (ht)/ 15' (w) x 6' – 6" (ht).
2. Excellent water resistance performance up to 1 kPa (21 psf) according to ASTM E331 and AAMA 501.1.
3. Excellent wind resistance up to 4.28kPa (90psf) and ideal for high-rise building.

4. Easy for installation, all door panel to be pre-assembled and glazed in shop prior delivery to minimize field resource.

Quality Assurance

Strict QA/QC control production at factory that is certified for ISO 9001 and ISO 14001.



ISO 14001:2004

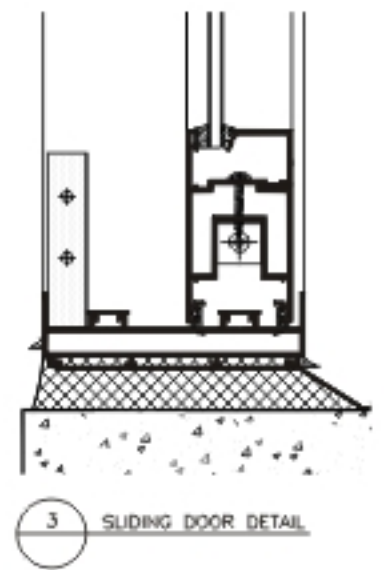
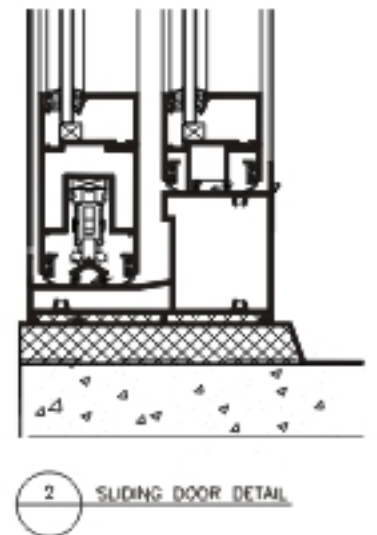
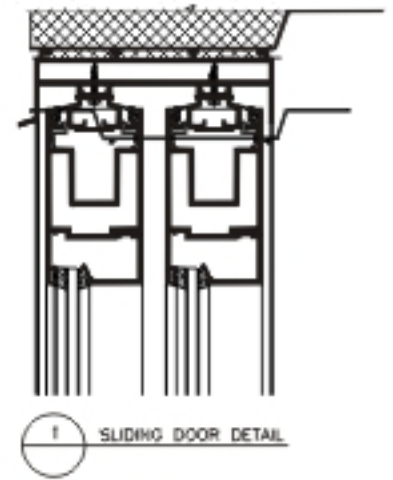
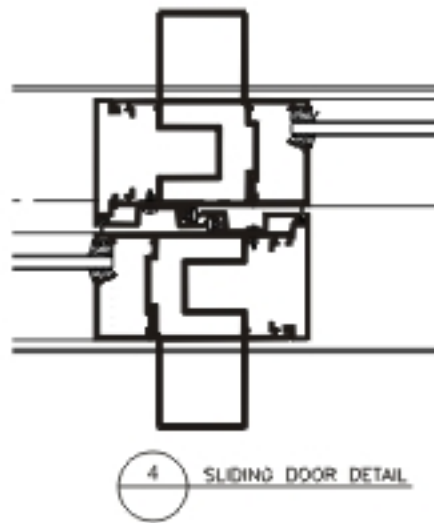
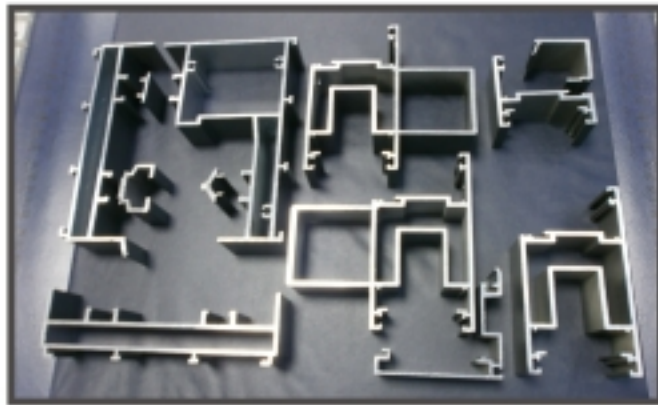
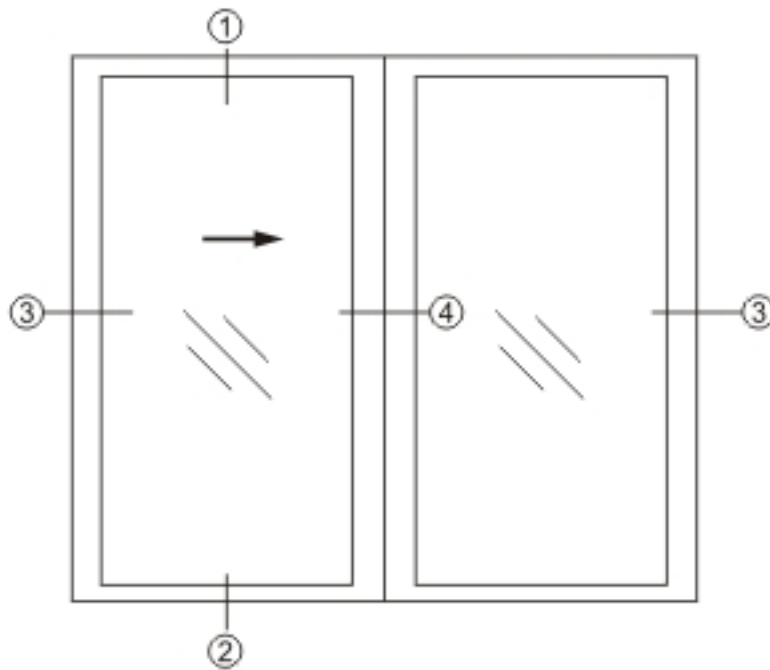


ISO 9001:2008

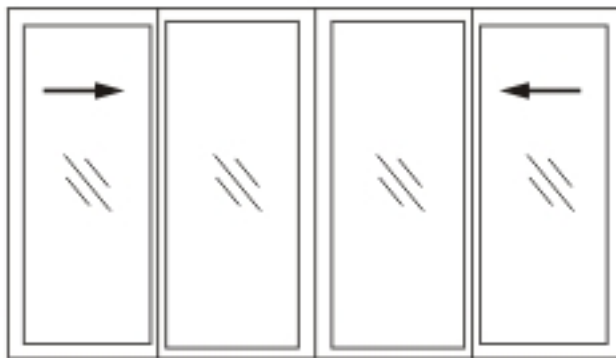


Subsidiary of AVIC Group

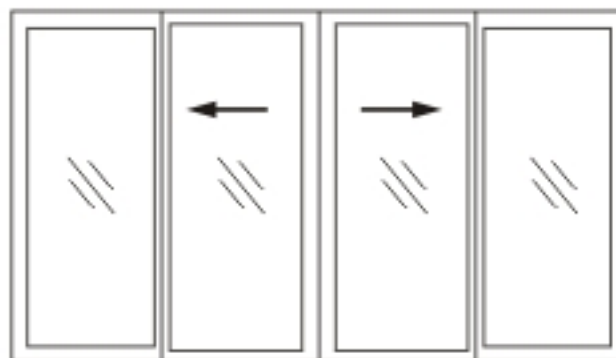
ALL DESIGN CONCEPTS AND DRAWINGS ARE COPYRIGHT RESERVED BY "SANXIN FAÇADE TECHNOLOGY LTD.". DO NOT SCALE THE DRAWINGS.



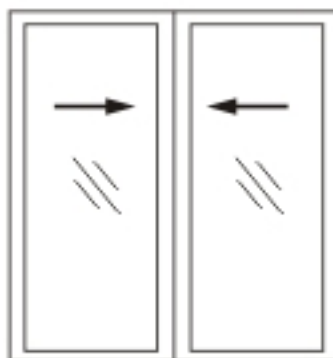
ALL DESIGN CONCEPTS AND DRAWINGS ARE COPYRIGHT RESERVED BY "SANXIN FAÇADE TECHNOLOGY LTD."
DO NOT SCALE THE DRAWINGS.



Type A



Type B



Type C

ALL DESIGN CONCEPTS AND DRAWINGS ARE COPYRIGHT RESERVED BY "SANXIN FAÇADE TECHNOLOGY LTD.". DO NOT SCALE THE DRAWINGS.



Performance Test for SD4000 Sliding Door System

Procedure	Test Pressure	
	American Unit	Metric Unit
ASTM E283 Air Leakage	+/-6.3psf	+/-300Pa
ASTM E331 Water Penetration Test, Static	+21psf	+1000Pa
AAMA 501.1 Water Penetration Test, Dynamic	+21psf	+1000Pa
Structural Adequacy Test, Cyclic	+/-37psf to +/-90psf	+/- 1.75kPa to +/-4.28kPa
Repeat ASTM E331 Water Penetration Test, Static	+21psf	+1000Pa

