

SFT

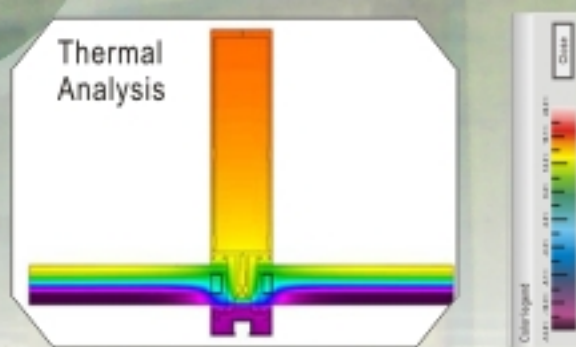
Sanxin Façade Technology

Thermal Stick Curtain Wall System-CW2000T

DESIGN ENGINEERING

MATERIAL TESTING

FABRICATION DELIVERY



Thermal Stick Curtain Wall System-CW2000T

Developed by SFT as part of its determination in innovative design and continuous technological improvement, CW2000T is ideal for different types of exterior wall structure. With an efficient polyamide structural thermal barrier and high performance glass unit, it can achieve U-value of 1.1~3.6 W/m²K (0.93~2.0 Btu/hr.ft.F)*

With our key members from Hong Kong leading façade companies and solid experience in handling prestigious buildings around the world, SFT could provide the thermal break façade system complying with the international specification standards, such as AAMA, ASTM, EN, BS, CANS, AS etc.

*Actual U-value to be subject to each job case like could be vary due to vision/ spandrel ratio, selection of glass... etc

Key Features

As an advanced yet simple façade system, CW2000T adds value to building projects by offering:

1. Energy Savings
2. Condensation Resistance
3. Design Flexibility
4. Cost Effectiveness
5. Durability

Performance

CW2000T fully meets BS, EN Standard and ensure the kind of performance that reduces building operating costs and pleases occupants.



ISO 14001:2004



ISO 9001:2008

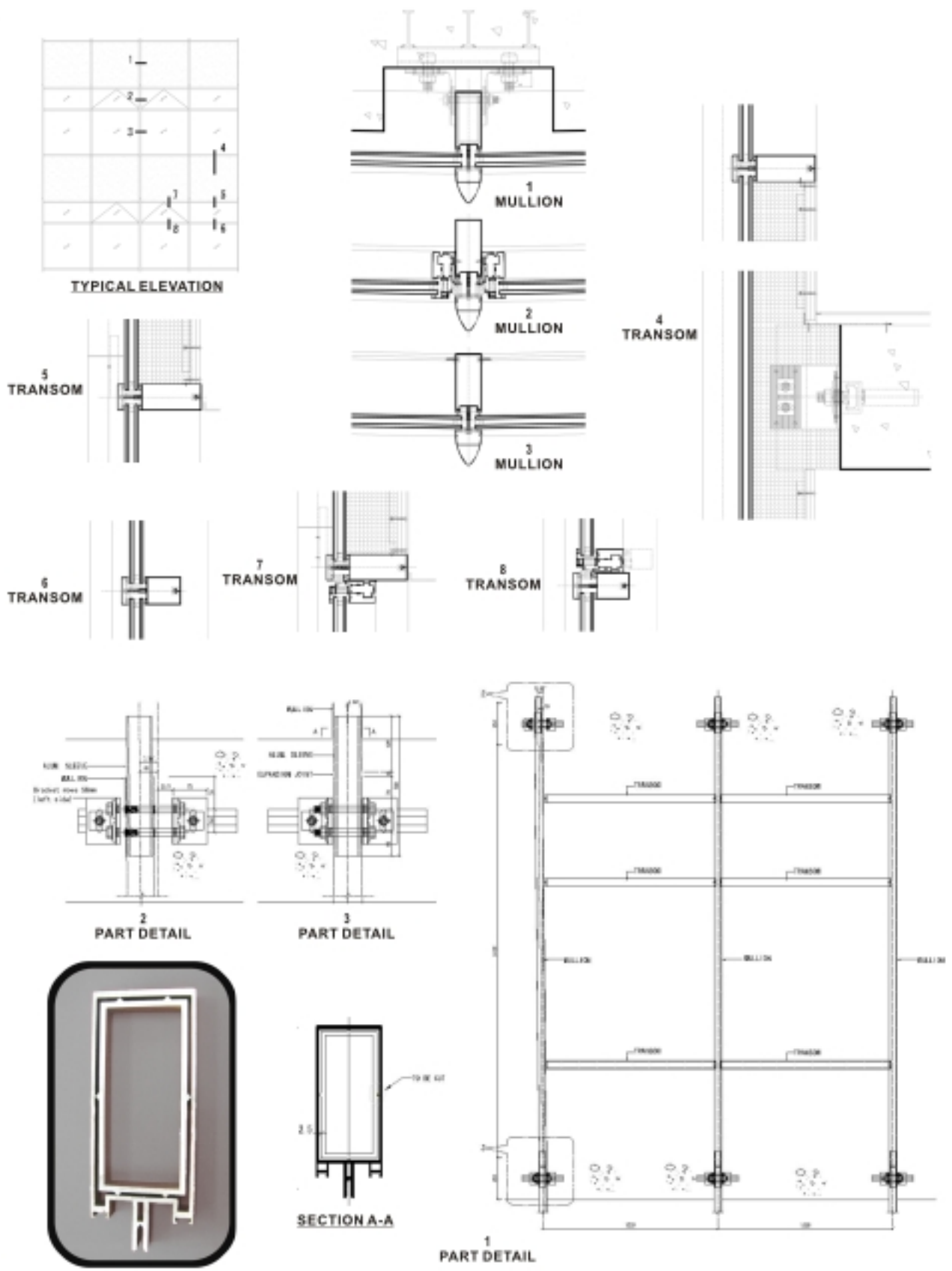


Subsidiary of AVIC Group

www.sanxinfacade.com
info@sanxinfacade.com

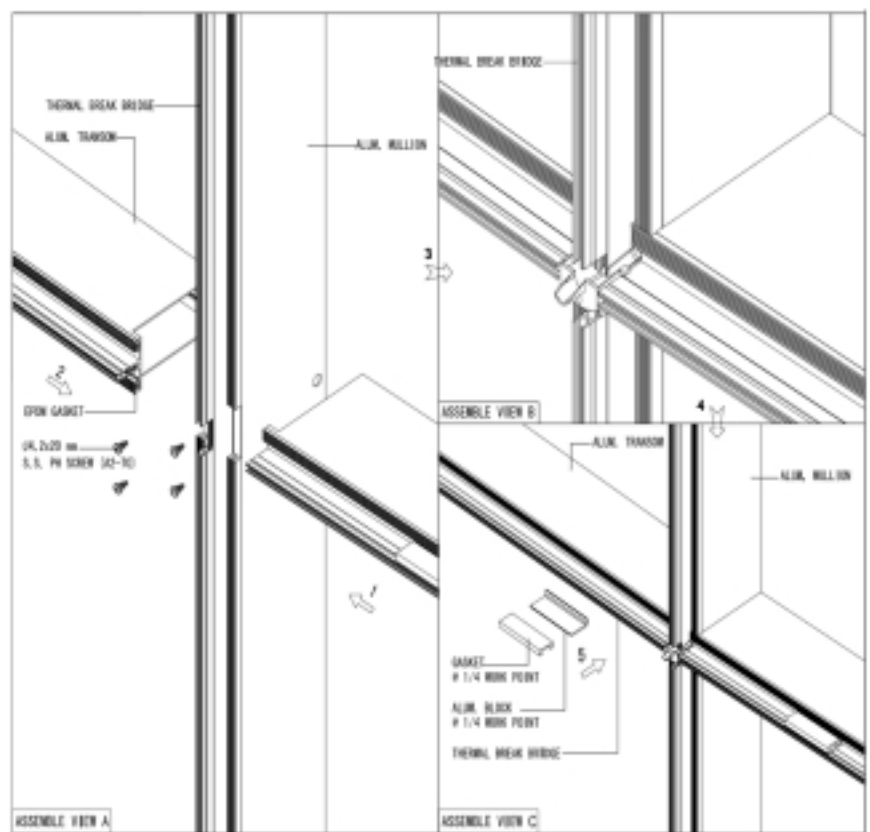
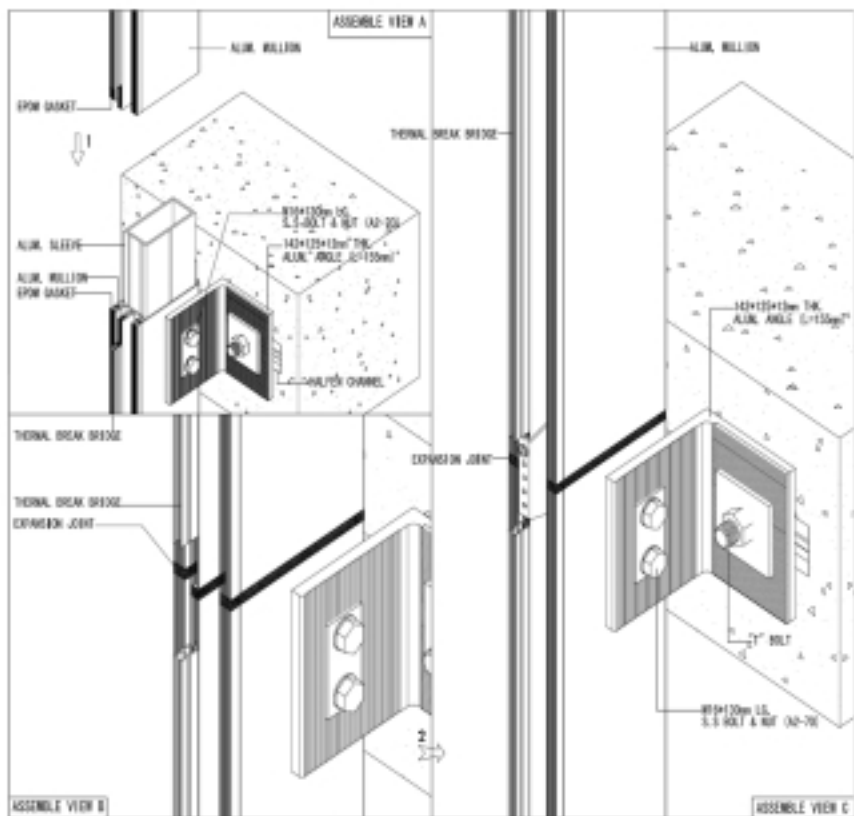
ALL DESIGN CONCEPTS AND DRAWINGS ARE COPYRIGHT RESERVED BY "SANXIN FAÇADE TECHNOLOGY LTD.". DO NOT SCALE THE DRAWINGS.

ASSEMBLY DRAWING



ASSEMBLY DRAWING

ALL DESIGN CONCEPTS AND DRAWINGS ARE COPYRIGHT RESERVED BY "SANXIN FAÇADE TECHNOLOGY LTD.".
DO NOT SCALE THE DRAWINGS.



ASSEMBLY DRAWING

ALL DESIGN CONCEPTS AND DRAWINGS ARE COPYRIGHT RESERVED BY "SANXIN FAÇADE TECHNOLOGY LTD.". DO NOT SCALE THE DRAWINGS.

